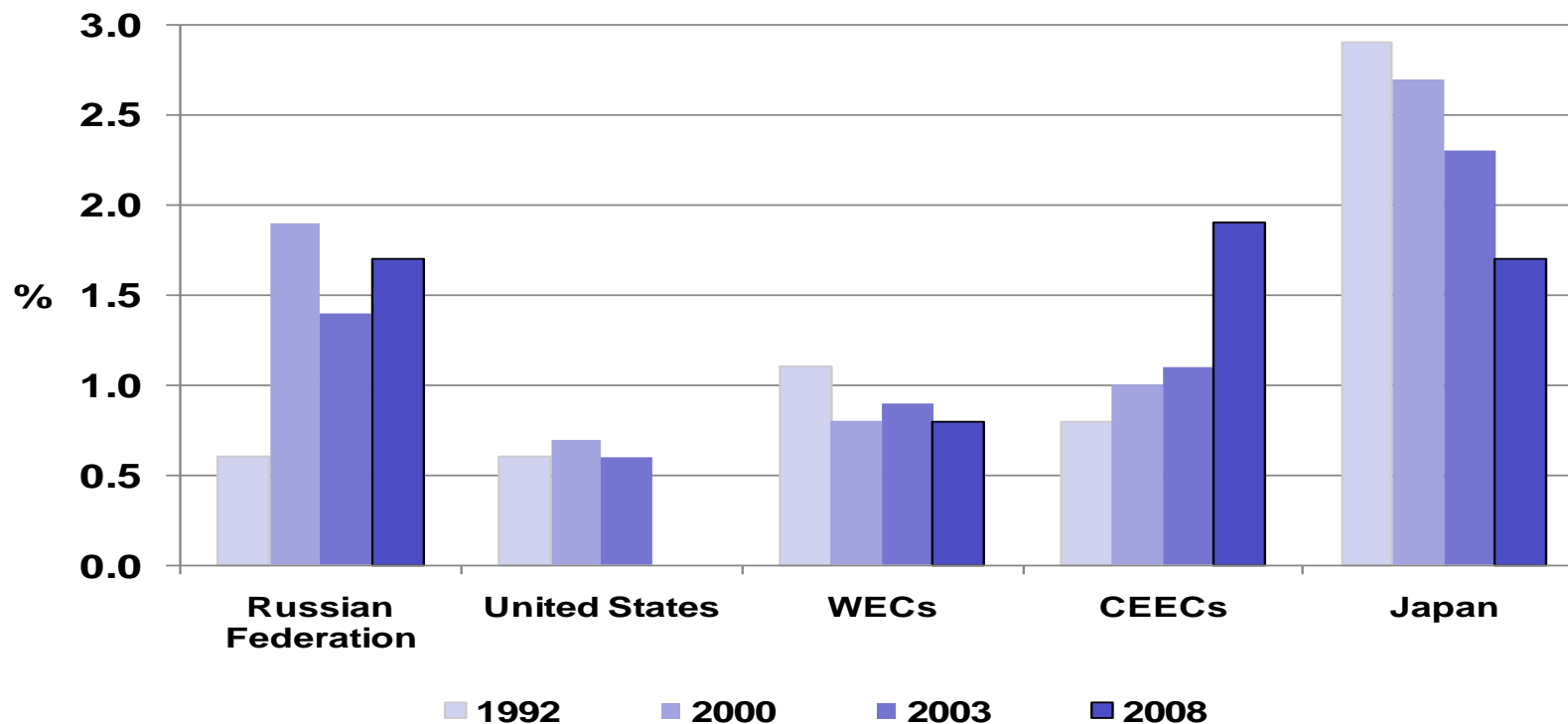


Investment in Inland Transport Infrastructure as a % of GDP

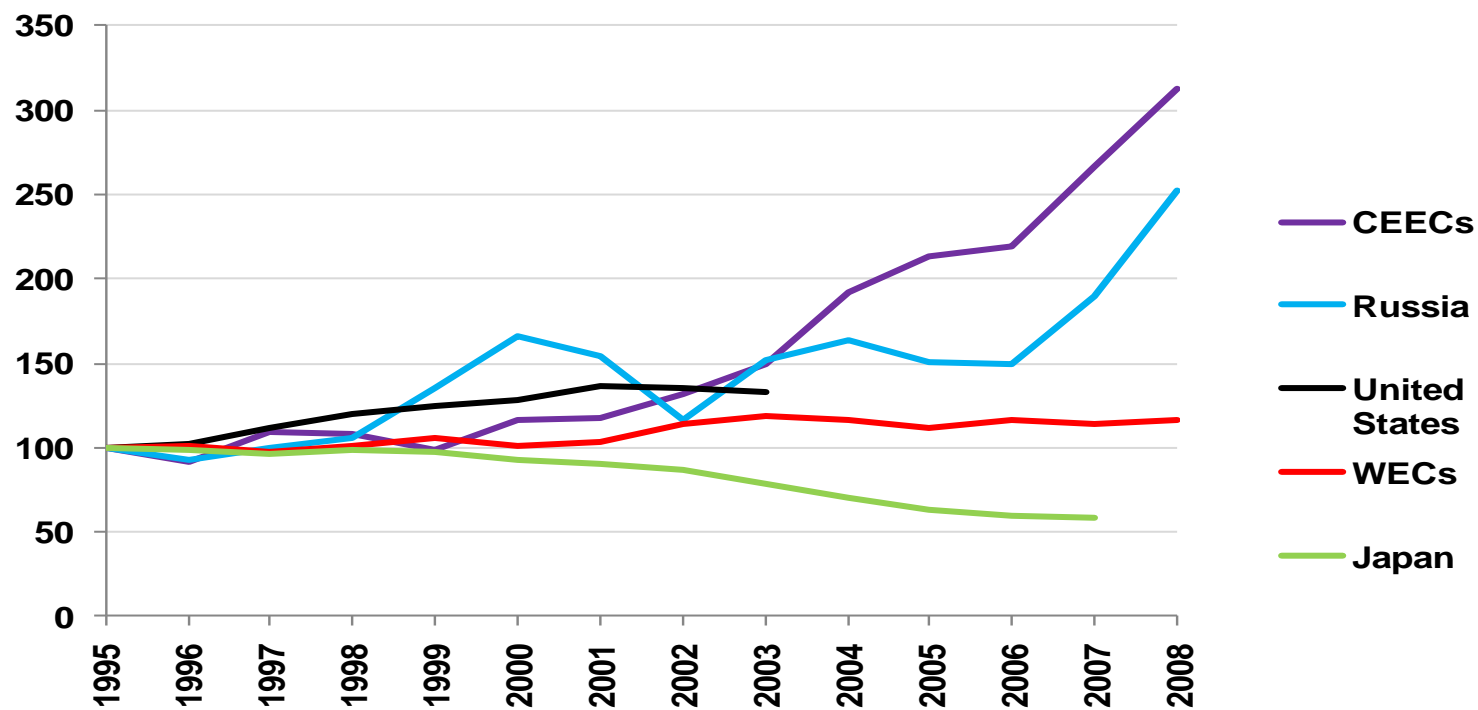
Current prices



Source: ITF Investment in Transport Infrastructure. Note: CEECs and WECs in Euros, current prices and exchange rates. Japan 2008 refers to 2007.

Investment in Inland Transport Infrastructure

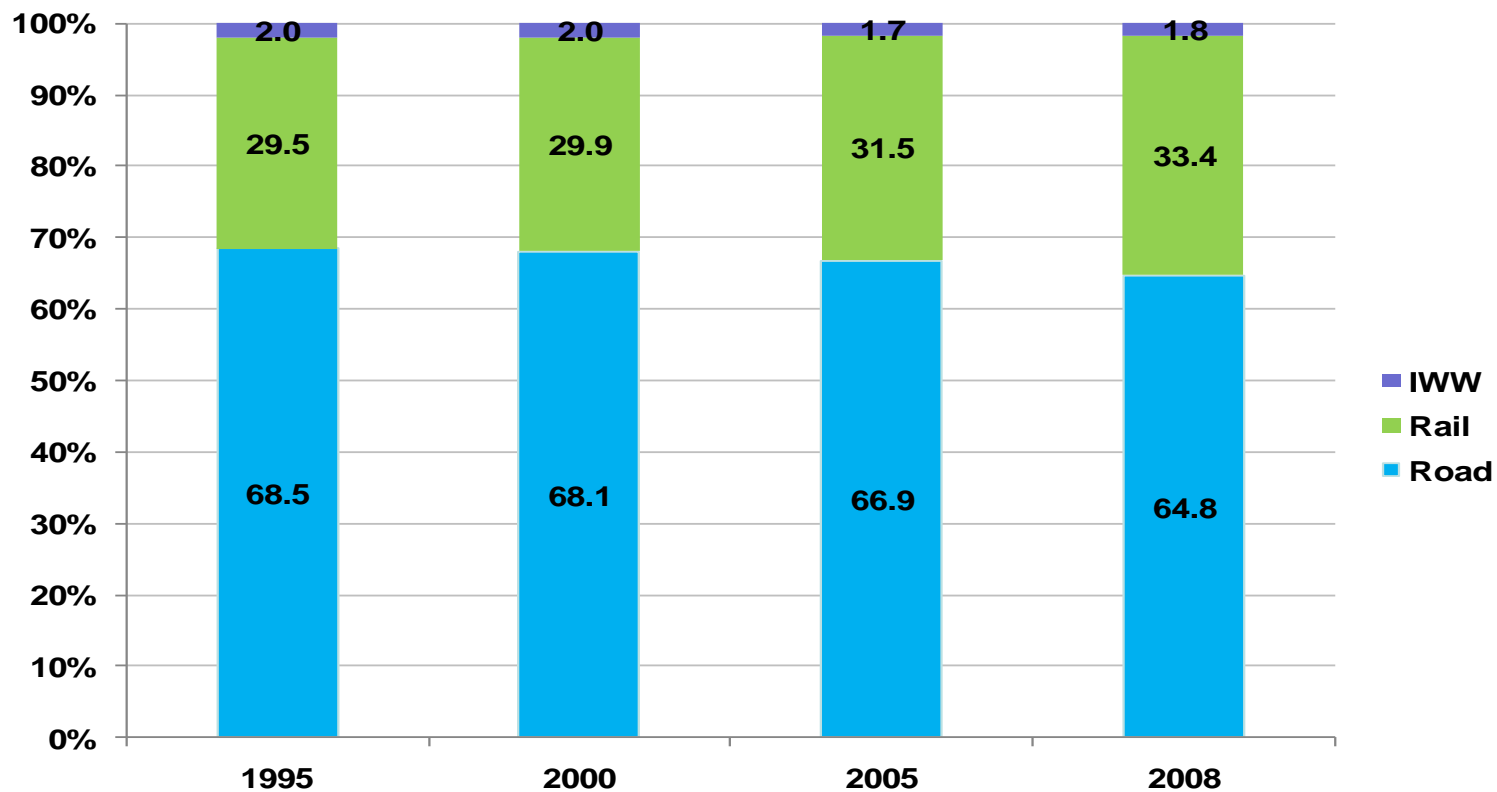
1995=100 – constant 2005 prices



Source: ITF Investment in Transport Infrastructure. Note: CEECs and WECs in Euros, constant prices, 2005 exchange rates.

Transport Infrastructure Investment Modal Split Western European Countries

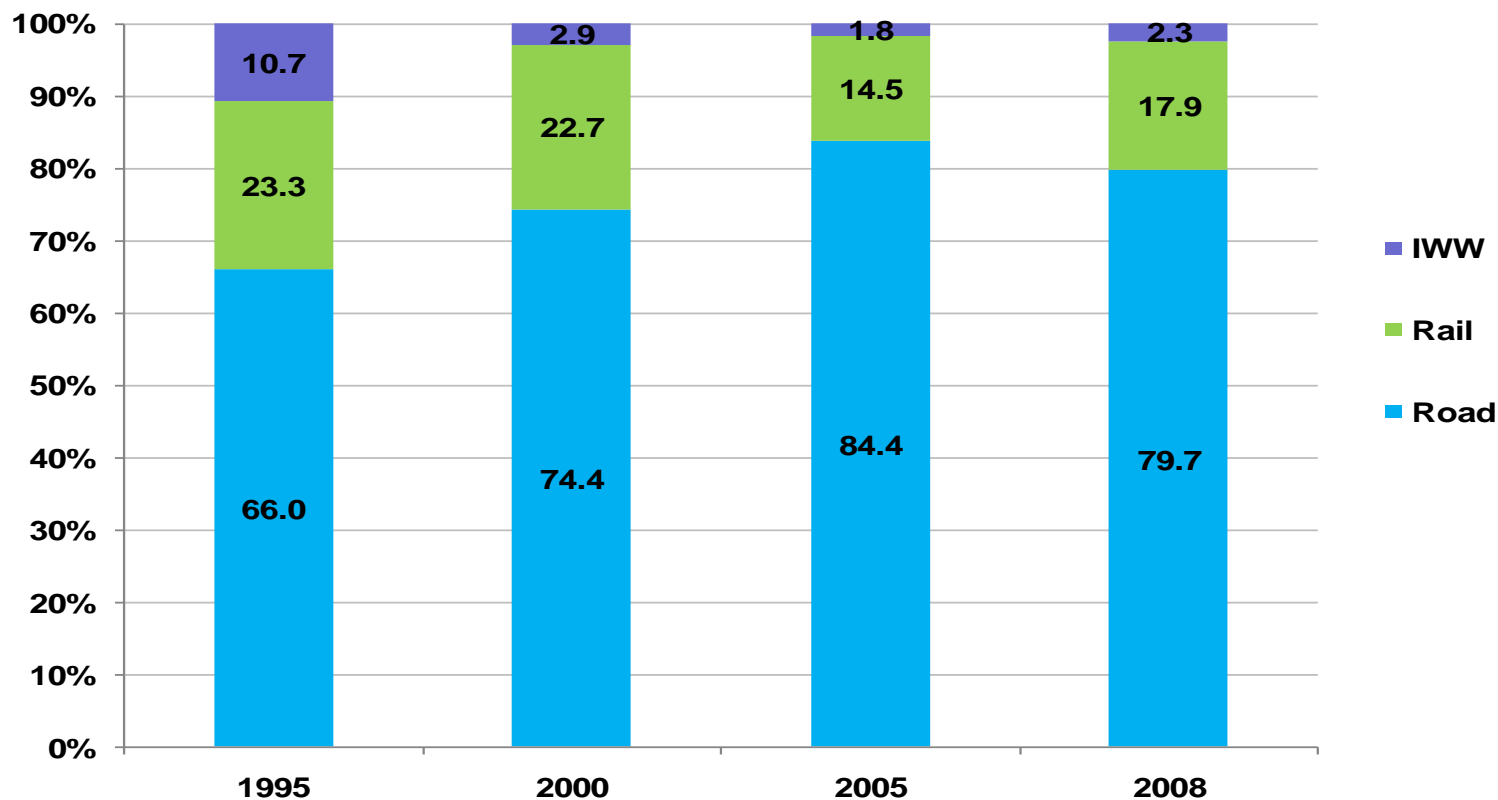
Euros, current prices and exchange rates



Source: ITF Investment in Transport Infrastructure.

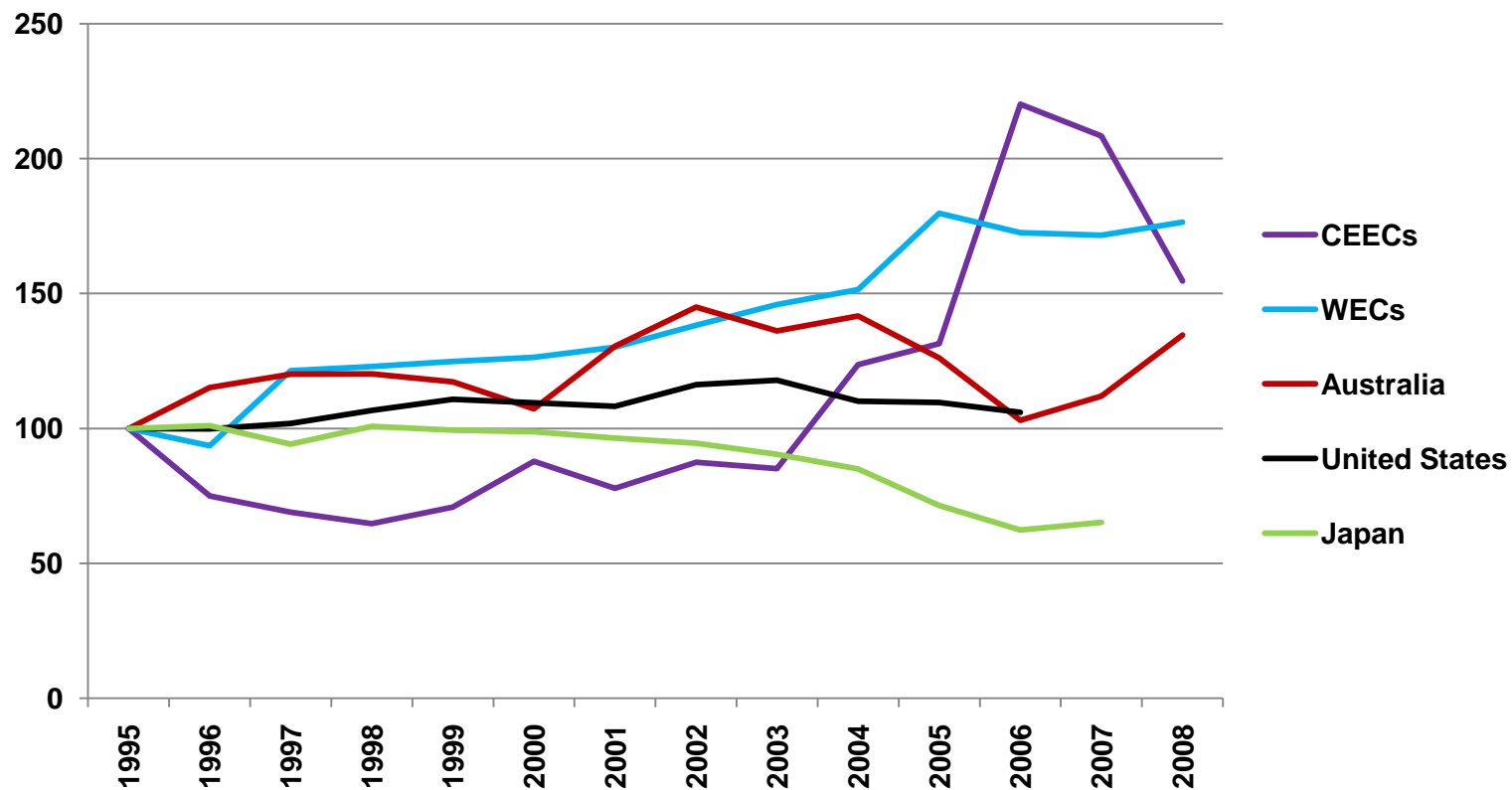
Transport Infrastructure Investment Modal Split Central and Eastern European Countries

Euros, current prices and exchange rates



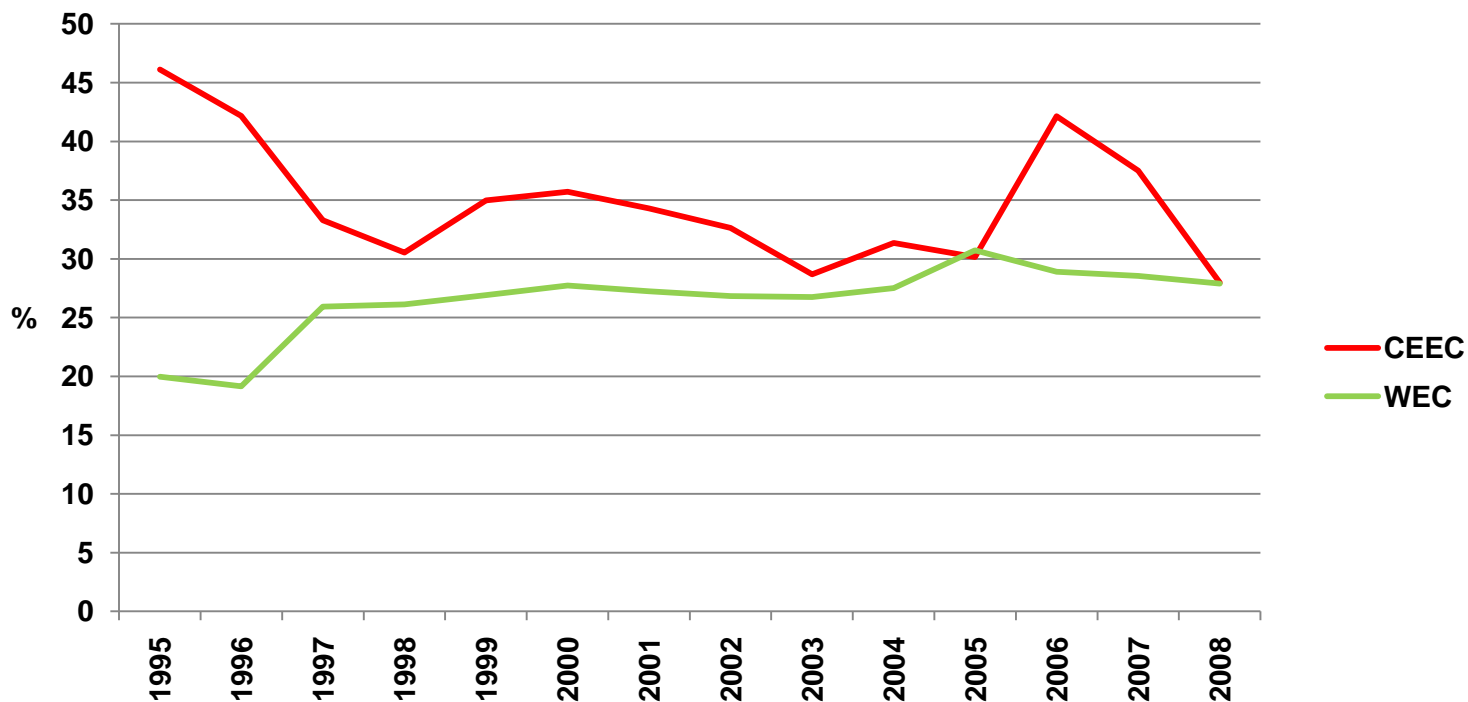
Source: ITF Investment in Transport Infrastructure.

Trends in maintenance in inland transport infrastructure (1995=100) (at constant 2005 prices)



Source: [ITF investment in transport infrastructure](#)

Maintenance share of total inland transport infrastructure expenditure (Euros, current prices and exchange rates)



Source: [ITF investment in transport infrastructure](#)